

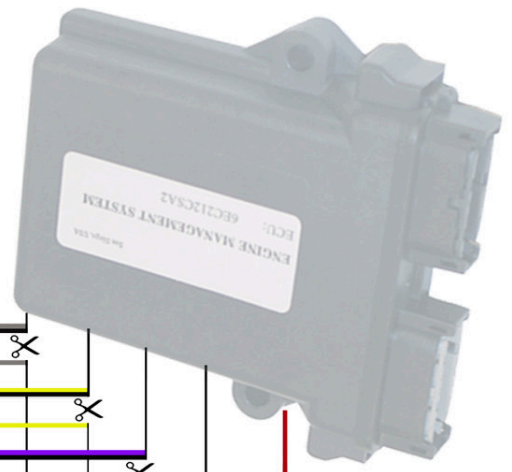
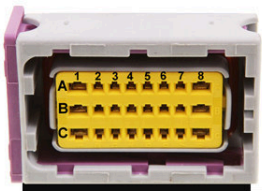
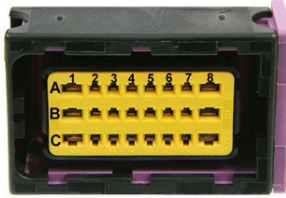
VERSUSGAS WIRING 4-CYL. SCHEME

BLACK PLUG PINS:

- | | |
|-----------|----------|
| C8 PETR 1 | B5 ECU 5 |
| B8 PETR 2 | C5 ECU 6 |
| B6 PETR 3 | A4 ECU 7 |
| A8 PETR 4 | C4 ECU 8 |
| A5 PETR 5 | C1 LPG 1 |
| C6 PETR 6 | C2 LPG 2 |
| B4 PETR 7 | B1 LPG 3 |
| C3 PETR 8 | A1 LPG 4 |
| C7 ECU 1 | B2 LPG 5 |
| B7 ECU 2 | A2 LPG 6 |
| A6 ECU 3 | A3 LPG 7 |
| A7 ECU 4 | B3 LPG 8 |

GREY PLUG PINS:

- B1 MAIN POWER SUPPLY (KEY +12V)
- A8 BATTERY (BAT +12V)
- A4 MAP-SENSOR (MAP)
- B2 MAP-SENSOR (+12 V)
- B3 FUEL LEVEL SENSOR (FUEL)
- B4 LPG TEMP SENSOR
- C4 LPG TEMP SENSOR-REDUCER
- A2 CONSOLE (PWR +12V)
- C7 CONSOLE (BUTTON)
- B7 CONSOLE (BUZZER)
- A7 CONSOLE (LED1)
- C6 CONSOLE (LED2)
- A6 CONSOLE (LED3)
- B6 CONSOLE (LED 4)
- C1 GROUND
- C2 GROUND
- C5 MAP-SENSOR FOR CALIBRATION PROCEDURE
- A3 LAMBDA OXYGEN SENSOR
- A1 RPM SIGNAL
- C8 LPG INJECTORS-POWER SUPPLY (LPG +12V)
- B8 LPG VALVE +12V
- A5 DIAGNOSTICS (Rx)
- B5 DIAGNOSTICS (Tx)
- C3 DIAGNOSTICS (+12V)



- C7 GREY/BLACK
- C8 GREY
- B7 YELLOW/BLACK
- B8 YELLOW
- A6 VIOLET/BLACK
- B6 VIOLET
- A7 BLUE/BLACK
- A8 BLUE

C8 RED +12V

LPG + 12V

- A1 BLUE
- B1 VIOLET
- C2 YELLOW
- C1 GREY

- C1 BLACK
- A4 BLUE
- B2 RED

C2 BLACK

A8 RED

B8 BLUE

B1 RED/BLACK

+ 12V KEY after ignition

A1 BROWN

C4 PINK

C1 BLACK

REDUCER'S TEMP. SENSOR

A3 VIOLET

OXYGEN (LAMBDA) SENSOR
connection not required

- A5 YELLOW
- C1 BLACK
- B5 BLUE

USB/RS 232 INTERFACE

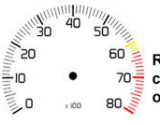
B3 WHITE

VERSUS 1050 sensor (LPG)/
Manometer VRC01 (CNG wire with white plug)

- B6 RED
- C7 BLACK
- A7 GREEN
- C8 BLUE
- A6 YELLOW
- A2 WHITE
- B7 PINK

CHANGE-OVER SWITCH

BUZZER



connect to ignition coil minus pin
or other signal min. 4 Vpp.

REDUCER'S GAS VALVE/
MULTIVALVE

ABSOLUTE PRESSURE
SENSOR

BATTERY

